

SEA

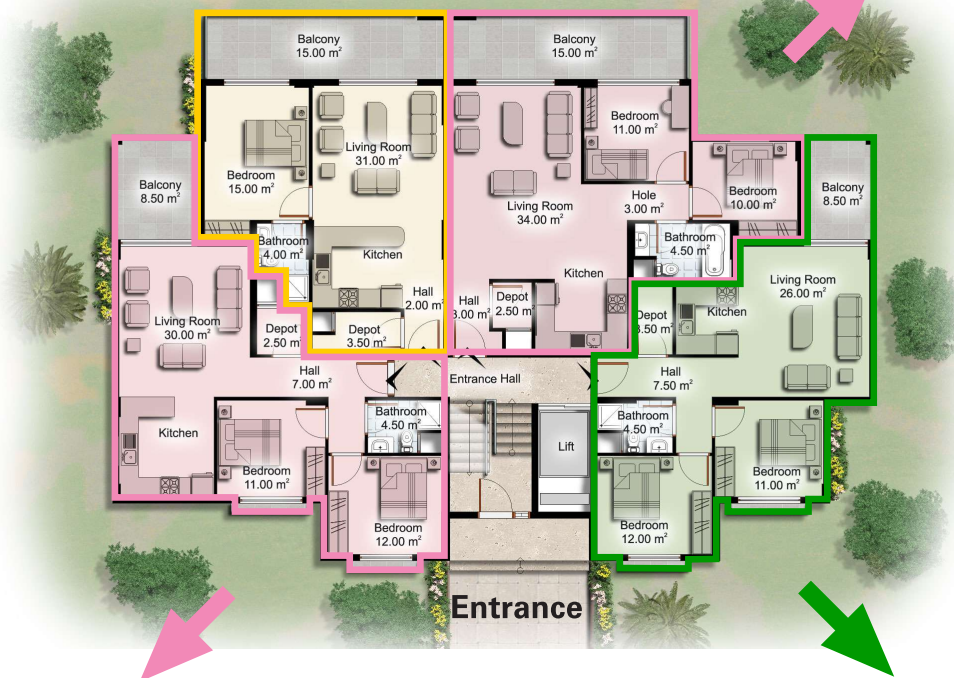

SOLARIS
apartments

PRICE LIST

SEA

A2, A6, A10, A14

A3, A7, A11, A15

A Block Floor Plan


A1, A5, A9, A13

A4, A8, A12, A16

C2, C5, C8, C11

C Block Floor Plan


C1, C4, C7, C10

C3, C6, C9, C12

A BLOCK

NO	FLOOR	AREA	BED.	PRICE	SITUATION
A1	Ground	76 m2	2+1	€ 86.000 / £57.800	<input type="checkbox"/>
A2	Ground	70 m2	1+1	€ 69.000 / £46.500	<input type="checkbox"/>
A3	Ground	83 m2	2+1	€ 92.000 / £61.200	<input type="checkbox"/>
A4	Ground	73 m2	2+1	€ 84.000 / £56.500	<input type="checkbox"/>
A5	First	76 m2	2+1	€ 89.000 / £59.800	<input type="checkbox"/>
A6	First	70 m2	1+1	€ 72.000 / £48.500	<input type="checkbox"/>
A7	First	83 m2	2+1	€ 95.000 / £64.000	<input type="checkbox"/>
A8	First	73 m2	2+1	€ 87.000 / £58.500	<input type="checkbox"/>
A9	Second	76 m2	2+1	€ 90.000 / £60.500	<input type="checkbox"/>
A10	Second	70 m2	1+1	€ 73.000 / £49.200	<input type="checkbox"/>
A11	Second	83 m2	2+1	€ 96.000 / £64.500	<input type="checkbox"/>
A12	Second	73 m2	2+1	€ 88.000 / £59.200	<input type="checkbox"/>
A13	Third	76 m2	2+1	€ 91.000 / £61.200	<input type="checkbox"/>
A14	Third	70 m2	1+1	€ 74.000 / £49.800	<input type="checkbox"/>
A15	Third	83 m2	2+1	€ 97.000 / £65.200	<input type="checkbox"/>
A16	Third	73 m2	2+1	€ 89.000 / £59.800	<input type="checkbox"/>

C BLOCK

NO	FLOOR	AREA	BED.	PRICE	SITUATION
C1	Ground	105 m2	3+1	€ 106.000 / £71.300	<input type="checkbox"/>
C2	Ground	87 m2	2+1	€ 96.000 / £64.500	<input type="checkbox"/>
C3	Ground	102 m2	3+1	€ 104.000 / £70.000	<input type="checkbox"/>
C4	First	105 m2	3+1	€ 109.000 / £73.300	<input type="checkbox"/>
C5	First	87 m2	2+1	€ 99.000 / £66.500	<input type="checkbox"/>
C6	First	102 m2	3+1	€ 107.000 / £72.000	<input type="checkbox"/>
C7	Second	105 m2	3+1	€ 110.000 / £74.000	<input type="checkbox"/>
C8	Second	87 m2	2+1	€ 100.000 / £67.200	<input type="checkbox"/>
C9	Second	102 m2	3+1	€ 108.000 / £72.700	<input type="checkbox"/>
C10	Third	105 m2	3+1	€ 111.000 / £74.700	<input type="checkbox"/>
C11	Third	87 m2	2+1	€ 101.000 / £68.000	<input type="checkbox"/>
C12	Third	102 m2	3+1	€ 109.000 / £73.300	<input type="checkbox"/>

SEA

SEA

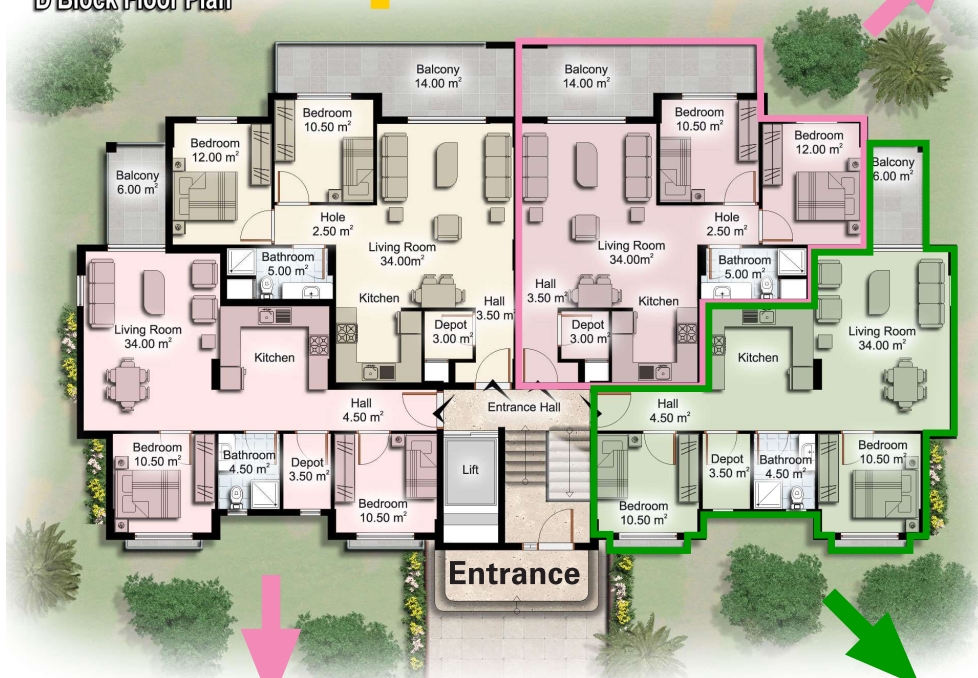


PRICE LIST

D2, D6, D10, D14

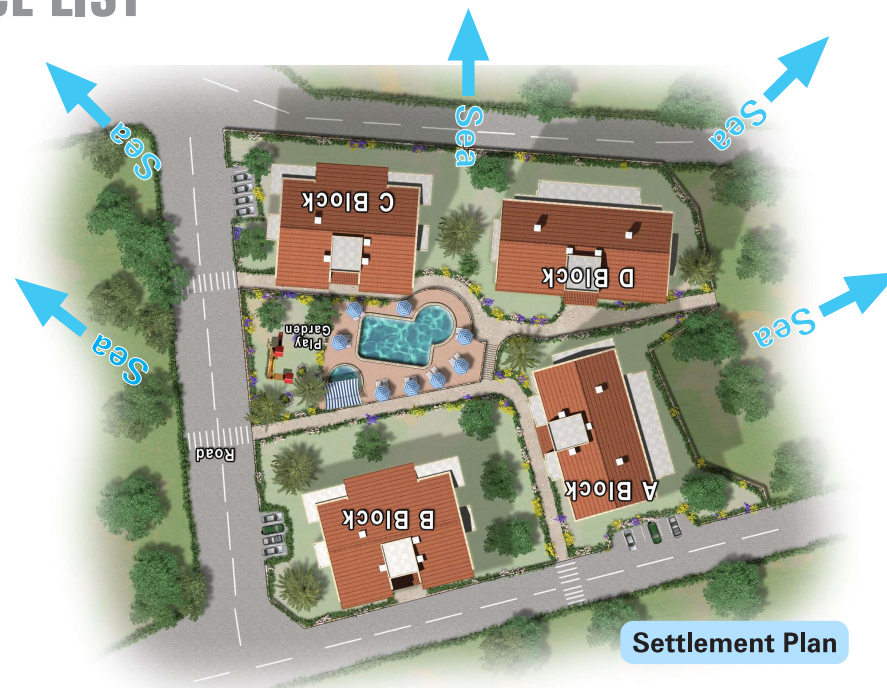
D3, D7, D11, D15

D Block Floor Plan



D1, D5, D9, D13

D4, D8, D12, D16



Settlement Plan



PAYMENT SCHEDULE

Step 1

Step 2

Step 3

Step 4

NO	FLOOR	AREA	BED.	PRICE	SITUATION
D1	Ground	74 m2	2+1	€ 85.000 / £57.000	<input type="checkbox"/>
D2	Ground	85 m2	2+1	€ 94.000 / £63.200	<input type="checkbox"/>
D3	Ground	85 m2	2+1	€ 94.000 / £63.200	<input type="checkbox"/>
D4	Ground	74 m2	2+1	€ 85.000 / £57.000	<input type="checkbox"/>
D5	First	74 m2	2+1	€ 88.000 / £59.200	<input type="checkbox"/>
D6	First	85 m2	2+1	€ 97.000 / £65.200	<input type="checkbox"/>
D7	First	85 m2	2+1	€ 97.000 / £65.200	<input type="checkbox"/>
D8	First	74 m2	2+1	€ 88.000 / £59.200	<input type="checkbox"/>
D9	Second	74 m2	2+1	€ 89.000 / £59.800	<input type="checkbox"/>
D10	Second	85 m2	2+1	€ 98.000 / £66.000	<input type="checkbox"/>
D11	Second	85 m2	2+1	€ 98.000 / £66.000	<input type="checkbox"/>
D12	Second	74 m2	2+1	€ 89.000 / £59.800	<input type="checkbox"/>
D13	Third	74 m2	2+1	€ 90.000 / £60.500	<input type="checkbox"/>
D14	Third	85 m2	2+1	€ 99.000 / £66.500	<input type="checkbox"/>
D15	Third	85 m2	2+1	€ 99.000 / £66.500	<input type="checkbox"/>
D16	Third	74 m2	2+1	€ 90.000 / £60.500	<input type="checkbox"/>

Deposit (On Booking)	On Contract (In a week after sign)	On Structure (When main structure finish)	On Block Completion
€ 5.000 or £ 3.000	50% of Sale Price (Approx) (As on the contract)	40% of Sale Price (Approx) (As on the contract)	Balance (As on the contract)

D BLOCK